

PART OF SEC. 21, T.5N., R.1W., S.L.B. & M.
PLEASANT VALLEY ESTATES-PHASE 3
LOTS 42 TO 52

274

IN SOUTH OGDEN CITY
 SCALE 1"=50'

PAGE 275 & 276 OMITTED

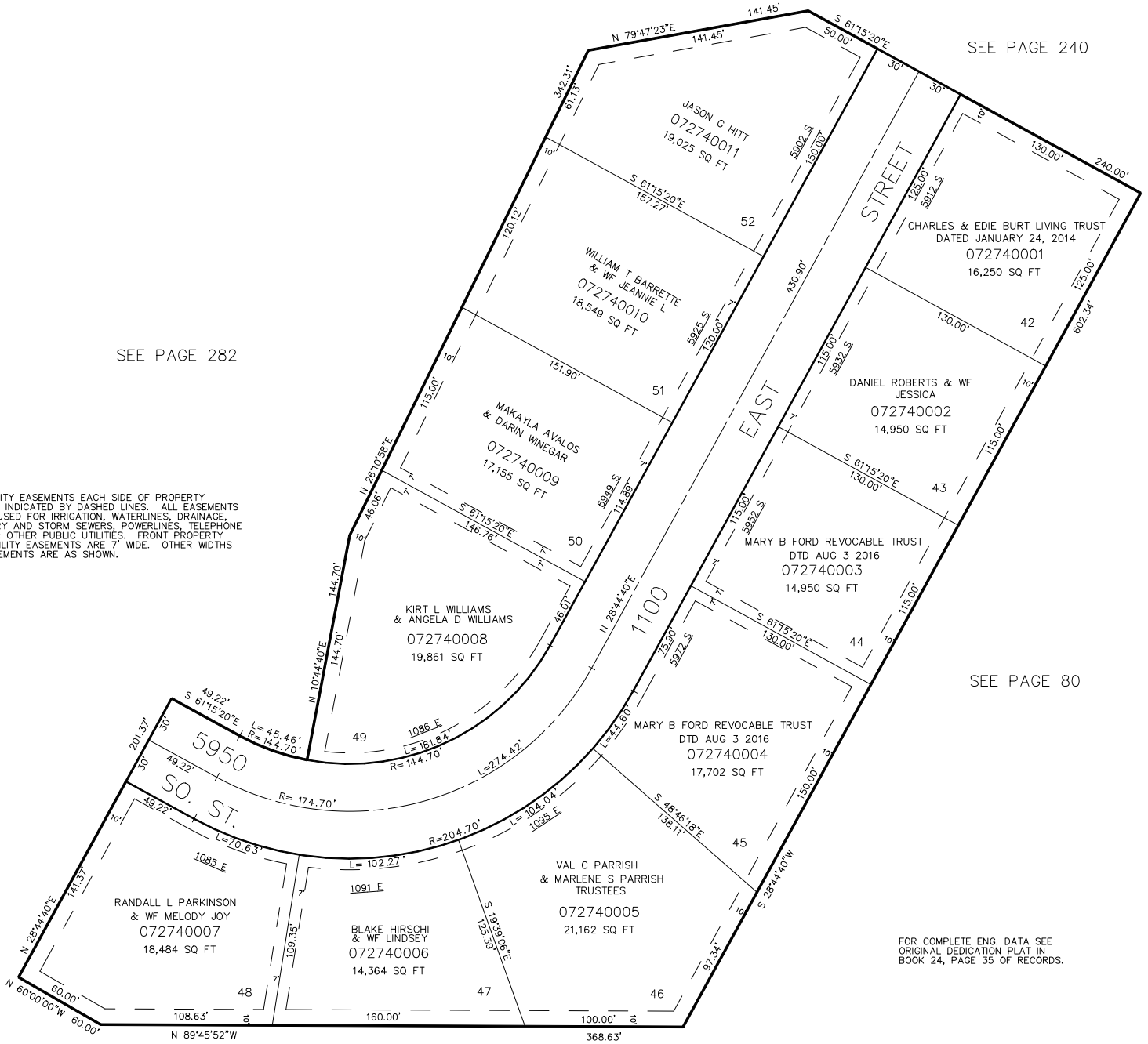
TAXING UNIT: 27

SEE PAGE 239

SEE PAGE 240

SEE PAGE 282

10' UTILITY EASEMENTS EACH SIDE OF PROPERTY LINE AS INDICATED BY DASHED LINES. ALL EASEMENTS TO BE USED FOR IRRIGATION, WATERLINES, DRAINAGE, SANITARY AND STORM SEWERS, POWERLINES, TELEPHONE LINES & OTHER PUBLIC UTILITIES. FRONT PROPERTY LINE UTILITY EASEMENTS ARE 7' WIDE. OTHER WIDTHS OF EASEMENTS ARE AS SHOWN.



SEE PAGE 80

FOR COMPLETE ENG. DATA SEE
 ORIGINAL DEDICATION PLAT IN
 BOOK 24, PAGE 35 OF RECORDS.